

# LALELA

LIFE-CHANGING ART



2023  
ANNUAL  
REPORT



# Our Mission

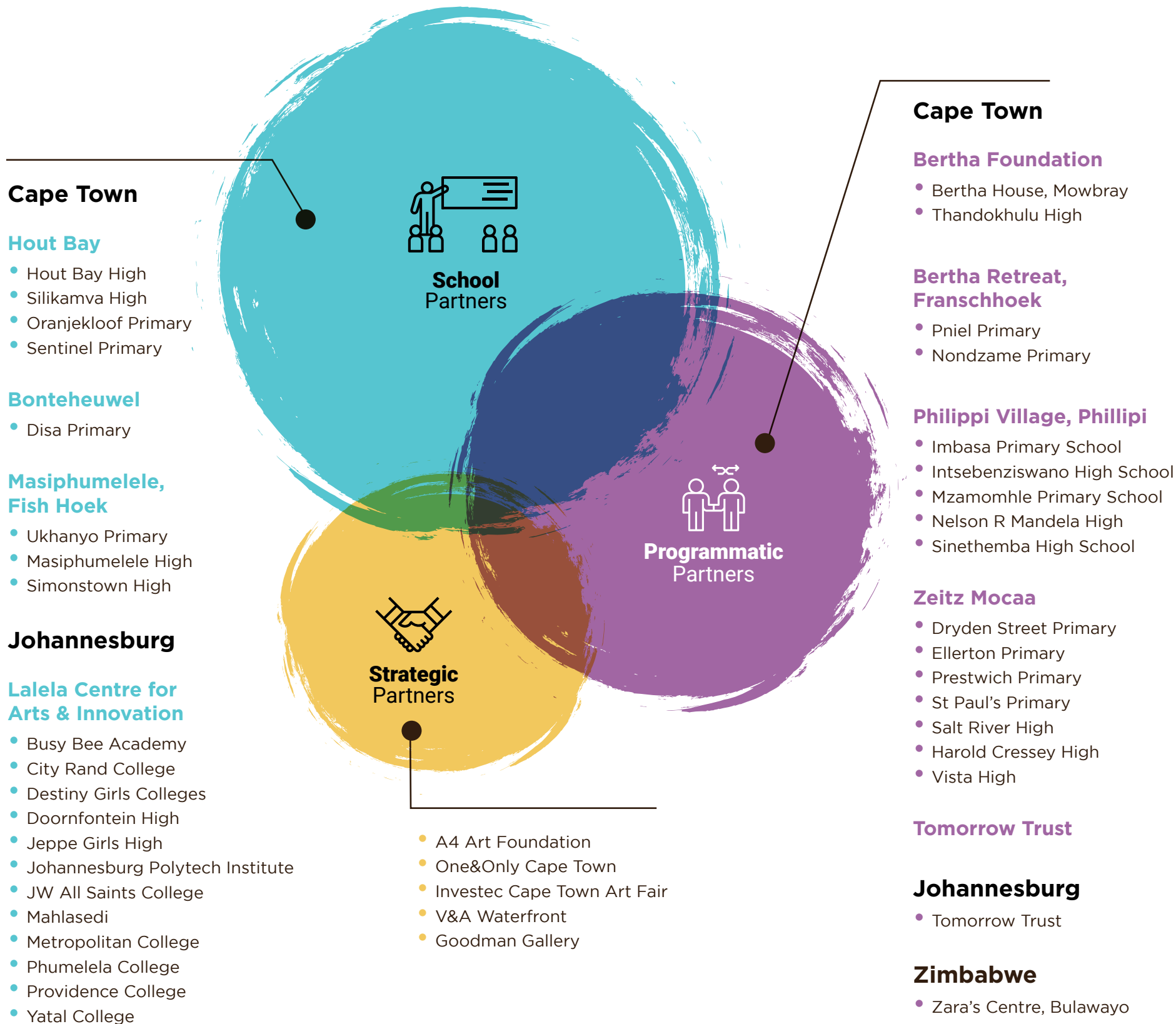
Lalela provides educational arts for youth from under-resourced communities to spark **creative thinking** and awaken the **entrepreneurial spirit**.

# Contents

04	<b>2023 Overview</b>
05	<b>Dear Friends</b>
06	<b>Our Story</b>
07	<b>2023 in Review</b>
08	<b>Why art?</b>
09	<b>Outcomes</b>
10	<b>We WON!</b>
12	<b>Methodology</b>
14	<b>Theory of change</b>
19	<b>Communities</b>
24	<b>Curriculum</b>
25	<b>Special programmes</b>
30	<b>Holiday programmes</b>
34	<b>Highlights</b>
36	<b>Lalela Scarf</b>
37	<b>Financials</b>
38	<b>Sustainability</b>
39	<b>Partners</b>
40	<b>Our People</b>



# Lalela Overview 2023



# Dear Lalela friends,

As we reflect on 2023, we are immensely proud of what our team and learners have accomplished. After three challenging years amidst the COVID-19 pandemic, 2023 was a beacon of strength for Lalela.



Operating at full capacity, we provided not only a place of safety and healing but also a space where young people could turn their aspirations into reality.

In 2023, we resumed our educational arts workshops with a renewed focus on mastery and skills development. Our goal has been to equip our learners with the tools and knowledge necessary to build a better future for themselves. Through Lalela's programmes, curriculum and outreach, we have fostered an environment where our children can thrive and realise their full potential.

This year, we reached a significant milestone by engaging nearly 3,000 learners each week. This achievement reflects the dedication of our facilitation and curriculum teams, who continue to inspire youth across South Africa. We were also honoured to receive the Best Arts and Culture Programme award from the Western Cape Government's Department of Cultural Affairs and Sport, recognising our impact in the field of arts education.

Our academic results were equally impressive. We received a 100% matric pass rate across all of our high school programmes, and at Silikamva High School in Hout Bay, all of our Lalela matriculants achieved a Bachelor's pass, with the majority being accepted into tertiary education. This result is a testament to our commitment to using arts education as a catalyst for social change.

Our trauma training initiatives gained significant momentum in 2023. Lalela's Resource Guide for Educators Working with Trauma-affected Learners, developed during the pandemic, has been crucial in

training 1,137 teachers from 579 schools, reaching over 123,000 learners nationwide.

The theme for 2023, "The Art of Illumination," has been the guiding light of our work this year. It symbolised not just the mastery of skills but the unveiling of hidden potential within each learner. Through this theme, we sought to kindle a spark in our students, helping them to see the world – and themselves – with greater clarity. As they honed their technical abilities, they also discovered new depths of creativity and self-belief, illuminating their paths to a brighter future.

In addition to our core programmes, our special initiatives – including the female empowerment and leadership programmes, our Shakespeare production, and various events and outings – have further enriched our learners' lives. Visits to art galleries, museums, and other creative spaces are vital, as they expose our learners to thought-provoking discussions that broaden their life experiences. By introducing them to new perspectives, we foster critical thinking and help them see the world in a new light.

As we close this chapter and look towards the future, we are filled with gratitude. To our supporters, partners, and the entire Lalela community – thank you. Your unwavering support has made every success possible, and we eagerly anticipate continuing this impactful journey together in the year to come.

*In gratitude,*

**Andrea Kerzner**  
Co-founder & CEO

**Firdous Hendricks**  
Executive Director

## LALELA (la-le-la)

Lalela is an isiZulu word that means **“to listen”**, and it is at the heart of what we do. By listening to children’s stories and each community’s needs, we are able to understand the challenges and, in turn, provide creative solutions and a way forward.



# Our Story

Since its inception in 2010, Lalela’s educational arts programme has impacted the lives of over 58,000 young people. What began with just 20 students in the township of Imizamo Yethu in the Western Cape of South Africa during the Soccer World Cup has evolved into a far-reaching initiative now serving numerous under-resourced communities across Cape Town, Johannesburg and Zimbabwe.

In collaboration with low-fee or no-fee schools and various youth-development organisations, we provide a safe and supportive environment where children can express themselves through the arts, particularly during the crucial after-school hours when guidance is most needed. We begin nurturing creativity as early as age six and continue to support our students until they matriculate.

By designing our curriculum at the intersection of arts education, academic achievement and critical life skills, Lalela’s workshops foster holistic development. They cultivate the creative potential of our youth, guiding them to become innovative role models and pursue meaningful careers. This approach enables them to map and manifest their dreams and goals, opening the door to a productive future for themselves and their communities.

*“I’ve seen how the arts can transform lives and strengthen communities. Our journey has been one of resilience, grounded in a commitment to listening deeply to the needs of the communities we serve. This approach has shaped our methodology and theory of change, ensuring that our growth is driven by the quality of our impact. I’m incredibly proud that over the past few years, this focus on meaningful, responsible development has allowed us to expand our reach in a way that truly makes a difference.”*

*– Firdous Hendricks, Executive Director*

# 2023 IMPACT Year in REVIEW

In 2023, Lalela thrived, offering safety and inspiration to 3,000 learners weekly. Our educational arts workshops resumed with a focus on mastery, equipping learners with the skills to shape their futures. We celebrated a 100% Matric pass rate and were honoured with the Best Arts and Culture Programme award. Our trauma training initiative reached over 123,000 learners, and special programmes like female empowerment and leadership further enriched their lives. The year's theme, "The Art of Illumination," inspired creativity and self-belief. We are deeply grateful to our supporters for making this transformative work possible.



**58,000+**

*Learners have experienced Lalela's life-changing arts curriculum to date*

**3,000**

*Learners attend Lalela per week*

**38**

*Low-fee, no-fee and other schools are in partnership with Lalela*

**71**

*Classes per week*

**100%**

*Pass rate for Lalela Matrics (Grade 12) final exams*

**81%**

*Received a Bachelor's Pass, allowing them to enter university institutions*

# Why the arts?

In times of limited resources, the arts are often the first to be cut from school curricula, despite the profound impact creativity has on a child's development.

Research proves that arts education enriches the lives of students, increasing their academic, social, mental and economic well-being over the long-term. Lalela's Monitoring and Evaluation (M&E) efforts have affirmed these findings, demonstrating that **arts education contributes to six key outcomes crucial for life and academic success.**

“We've had learners who struggled academically but found confidence and expression through art at Lalela. These learners have transitioned to high school and are excelling.”

– Marilyn November, Lalela Facilitator at Bonteheuwel, Western Cape

“What stands out to me is how the programme fosters creativity, helping learners express themselves and think critically. The projects encourage them to think outside the box and strive for extraordinary results. The programme also promotes problem-solving by giving learners group tasks, which has significantly contributed to building their confidence.”

– Thandi Gaji, Lalela Foundation Phase Facilitator at Hangberg, Western Cape



## Our Values

- A** Always inspire with creativity
- R** Reimagine challenge as opportunity
- T** Trust we can be Trailblazers of change



# Outcomes

Lalela's arts education programme contributes to six outcomes, which are key indicators of life and academic success.



## Academic achievement

Students engaged in the arts are five times less likely to drop out of school and three times more likely to graduate from college, leading to better career prospects. For Lalela's students, arts education boosts attendance, motivation and academic success, with these students consistently outperforming their peers on standardised tests.



## Critical problem-solving

Art students continuously re-evaluate their work, developing advanced problem-solving skills by adapting to new perspectives or materials. This process fosters patience and innovative thinking, equipping students to approach challenges with a unique perspective that is crucial for solving complex problems, both in and out of the classroom.



## Communication & collaboration

Arts education immerses students in collaborative projects like painting murals or performing skits, which enhance their teamwork skills. By navigating each other's strengths and weaknesses, students learn to listen actively and interpret social cues, building the communication skills necessary for effective collaboration in all areas of life.



## Grit & perseverance

Students in the arts receive constant feedback, learning that it is a tool for growth. Through persistent practice and revision, they develop the grit to refine their work and embrace criticism. This resilience, fostered in the arts, translates into academic success and perseverance in all aspects of life.



## Creativity & innovation

Arts education centres on cultivating creativity and innovation. Students are encouraged to explore multiple solutions and try new approaches, fostering a mindset open to experimentation. This creative thinking is foundational to innovation, equipping students with the skills needed to thrive in a competitive, ever-evolving world.



## Confidence & leadership

Presenting their work, whether through exhibitions or performances, instils a sense of accomplishment in art students. This experience strengthens their confidence, helping them develop a strong sense of identity and the ability to express their opinions. These qualities are essential for effective leadership within their communities.

# We won!

Lalela wins Best Arts & Culture Programme award

By inspiring and equipping learners to use their artistic voices for social change, Lalela helps shape future leaders and innovators.



Lalela was honoured with the Best Arts and Culture Programme award at the Cultural Affairs Awards, hosted by the Western Cape Department of Cultural Affairs and Sport.

This prestigious recognition **highlights Lalela's impact in fostering creativity, self-determination, and entrepreneurship in young people** and affirms the hard work, dedication and expertise that have gone into developing a successful model. By inspiring and equipping learners to use their artistic voices for social change, Lalela helps shape future leaders and innovators.

Additionally, our senior facilitator, **Tandi Makhabeni, was nominated for Best Arts and Culture Coach**, underscoring the team's dedication to nurturing creativity and growth among young learners.

These accolades reinforce Lalela's role in **transforming lives through the power of the arts.**

*Tandi Makhabeni (right), senior facilitator, Lalela and Firdous Hendricks (left), Executive Director, Lalela, accepting the award.*

*Willouby Chaguluka's journey highlights the power of creativity to inspire resilience and innovation. Growing up in Imizamo Yethu, a low-resource area of Cape Town, his story is one of determination as he pursues a BSc in Software Engineering while freelancing as a graphic designer.*

Life in Imizamo Yethu was tough but filled with resilience and hope. The township is overcrowded, with families in makeshift homes, facing unreliable electricity and inadequate sanitation. Fires and crime were constant threats – I've experienced both. Yet, community spirit thrived. Living there taught me resourcefulness, gratitude and the value of hard work, which I saw in my parents' efforts to provide for us.

I joined Lalela in grade 2, and from the moment I started drawing, I fell in love with it. Lalela offered me more than artistic skills – it gave me a space to express myself, connect with others and discover my potential. One of the most important things I gained was confidence. Lalela taught me that my voice and perspective matter. Art became a way to communicate my thoughts and experiences, especially when words failed. This helped build my self-esteem and empowered me to face challenges creatively.

Lalela also fostered a sense of community, bringing together young people from different backgrounds all facing similar struggles. It gave us a safe space to share our stories and support each other, leading to deep, lasting friendships. Additionally, Lalela opened my eyes to new opportunities, showing me that art can drive social change and build a future where creativity is valued. To me, Lalela represents hope, expression and the potential for change.

My dreams for the future include developing my craft, becoming financially stable to support my family and being a positive role model in my community. I want to be an agent of change, adding value to the world.



My message to the youth is this: as long as you're alive, you have the power to change your life. Never give up on your passion. Keep moving forward with courage, knowing each step brings you closer to your dreams. Believe in yourself, and practice gratitude – it will bring you peace.





# Our Methodology

Lalela's unique methodology is one of the key factors to our programme's success.

Lalela's arts programme helps learners build character, discover their purpose, and pursue their goals using their own resources.

By grounding our curriculum in comprehensive needs assessments, we ensure that our facilitation methods are both effective and responsive. Our approach is further strengthened by rigorous facilitator training and strategic partnerships within the community, ensuring a lasting impact on the lives we touch.

**I**deas, **A**rt and **M**usic (**I AM**) form the signature components of every Lalela curriculum.

Our methodology, in development since 2011, connects the arts to everything important in a child's life, from core academics to critical life skills. The heart of this approach lies in the learning cycle, which encourages learners to develop their own critical and creative thinking skills, allowing them to utilise their resources in pursuit of their goals.

## Through facilitation and experiential learning:

- **Knowledge is gained** through participation, experience, and reflection, deepening understanding and retention.
- **Learners are provided with resources** and structures to explore, innovate and develop within a safe, predictable routine that nurtures growth.
- **Learning is collaborative:** everyone has something to teach and something to learn, building on the learners' existing strengths and life experiences.
- **Transformation and behaviour change** are fostered by disrupting negative patterns through arts-based activities, games and discussion groups.
- **The whole learner is the focus:** body, mind, thoughts, feelings, actions and the totality of their being.

Lalela has developed a unique, replicable model that can easily be implemented in other communities.

Lalela supports and is aligned with these Sustainable Development Goals:





Impact  
Stories

**Thimna Precious Kulu** (18) is a first-year Bachelor of Social Work student at the University of Cape Town (UCT). Her experience of living in Masiphumelele significantly shaped her perspective and resilience. It was her sense of curiosity that propelled her forward in life, leading her to join the Lalela programme.

The challenges faced by the community are gangs, drugs and a lack of service provision. The challenges I faced as an individual included being bullied at school by my classmates and being sexualised by older men, but I am lucky that these experiences don't define who I am and where I am going.

I joined Lalela out of curiosity because, coming from Gqeberha in the Eastern Cape, organisations like Lalela were not available. It turned out to be one of the best decisions I've ever made. The knowledge

I gained from Lalela is invaluable. It's helped me become comfortable with who I am, and I found a true sense of belonging in that classroom - a tribe that supported me. Lalela means the world to me. I can confidently say it has played a significant role in shaping the woman I'm becoming, and I'm deeply thankful for that.

For my future, I want to help people because I love being of service. I aim to be successful in my work and career, and to give back to the community that raised me.



To the youth of South Africa, my advice is this: Don't follow the crowd. Surround yourself with people who challenge you, ground you, and are eager to learn. Be open to learning, and whatever you set your mind to, pursue it with all your heart!

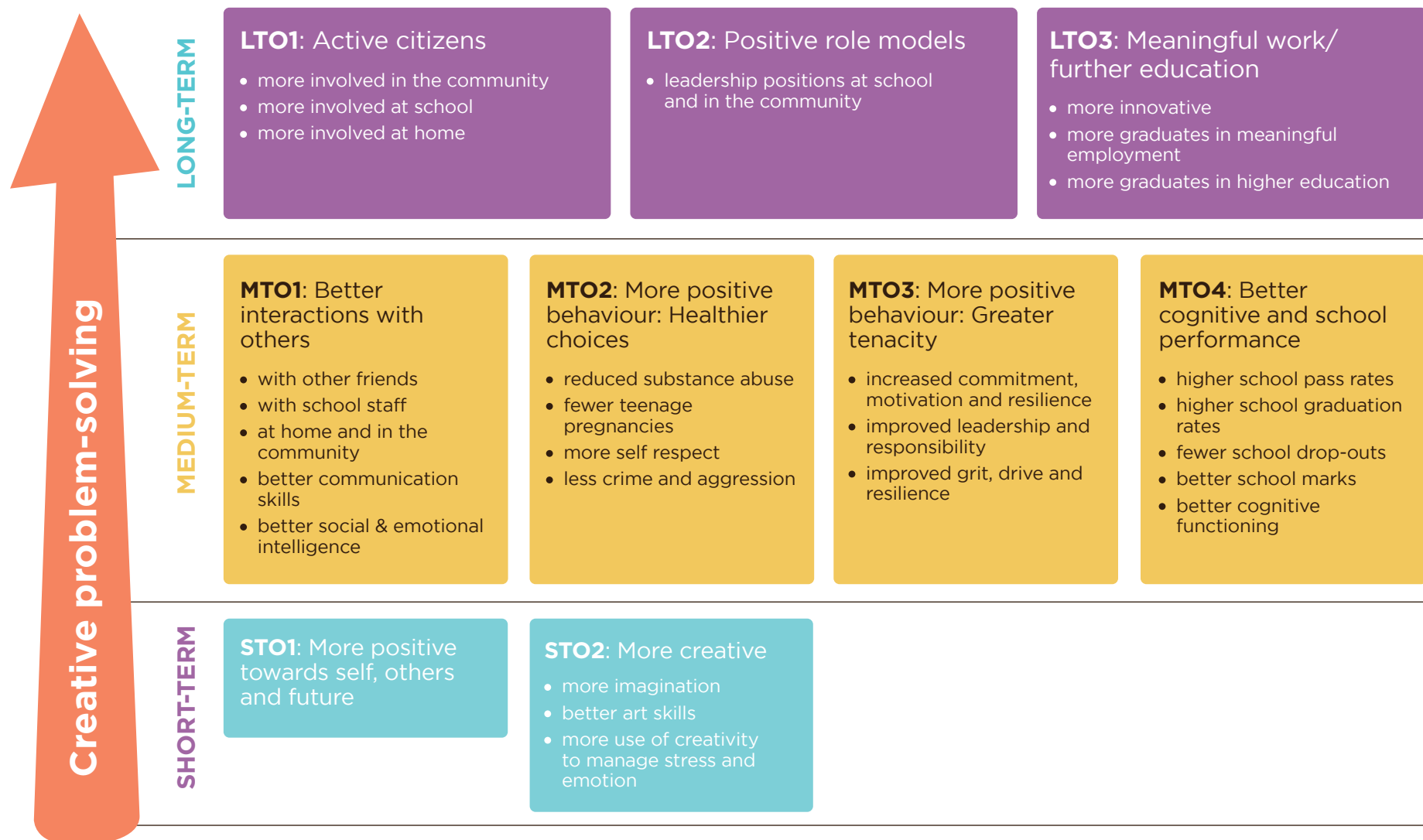


# Our theory of change

Our Monitoring and Evaluation Learning (MEL) model has been developed to measure the impact of our programme on a short- and long-term basis.

The Lalela MEL model has been developed in a participatory manner and is firmly based on actualities on the ground. The MEL model has been designed to be integrated into Lalela's programme processes and operations so that it is part of the work flow at all levels. Our innovative Theory of Change allows us to strengthen and refine the development of our arts education programme and ensures that we remain focused on the objectives. Our Theory of Change is based on the understanding that innovative and creative young people will contribute to social and economic development.

## Indicators





BY THE END OF 2023:

**1,137**  
**teachers**

from **579** schools,  
reaching over  
**123,000** learners.

Through our educational arts programmes, we have created innovative methods that enable learners to ground themselves, self-regulate and process their experiences following traumatic events.

## Lalela's Trauma Curriculum

Lalela's 'Guide for Educators Working with Learners Affected by Trauma' was developed in 2020 to address the compounded effects of COVID-19 on vulnerable learners. This guide is a natural extension of our commitment to supporting learners in challenging circumstances.

Our work regularly involves helping students affected by trauma. Through our educational arts programmes, we have created innovative methods that enable learners to ground themselves, self-regulate and process their experiences following traumatic events. These essential skills empower them to concentrate on their learning and creative pursuits in a safe, supportive environment.

The arts-based activities and exercises outlined in the guide are effective tools that educators can seamlessly incorporate into their lessons, enhancing our overarching mission to provide a nurturing space where learners can thrive despite their emotional challenges.

# Monitoring & evaluation



Notable improvements include heightened career aspirations, better emotional management and increased conscientiousness in schoolwork, all of which align with Lalela's Theory of Change.

In 2023, we conducted rigorous monitoring and evaluations of two core art programmes in Maboneng, Johannesburg, and Masiphumelele, Cape Town, as well as our Leadership Programme in Cape Town.

Our M&E reports revealed that both the Maboneng and Masiphumelele programmes demonstrate strong learner commitment, evidenced by healthy attendance and positive outcomes.

Notable improvements include heightened career aspirations, better emotional management and increased conscientiousness in schoolwork, all of which align with Lalela's Theory of Change.

The Leadership Programme also yielded significant positive outcomes, as shown in standardised survey responses. These improvements included increased empathy, greater self-awareness of strengths, the ability to assertively refuse rule-breaking behaviours, and enhanced self-esteem.



**Sibusiso Ndlovu** (21) is currently pursuing a bachelor's degree in Computer Science at the University of the Witwatersrand in Johannesburg. His path hasn't been easy – marked by financial hardships and personal struggles – but through the support of Lalela, he has rekindled his confidence and creativity.

My upbringing was a little challenging. While we weren't necessarily poor, my parents always ensured I had everything I needed. However, things became more difficult as I grew older when my father lost his job. It became harder to make ends meet, but somehow, my parents always managed.

Through Lalela, I learned a lot and rediscovered the parts of myself I had lost. It might sound cliché, but I used to be a bubbly, confident and creative child. Over time, I became more timid and uninspired, but Lalela helped me open up again,

regain my confidence, and make some lifelong friends. It also served as an escape from home, where I was dealing with some conflict.

In the near future, I can't wait to complete my qualifications and hopefully land a job as either a software developer or a data scientist. In the long term, I hope to bring positive change to our family's story. I want to be the first to earn my degree, build a proper home for my parents, and thank them for all they've done for me by making a meaningful difference.



To my fellow youth, I want to say that the power is truly in our hands. Africa is indeed the future, and we just need to get up and seize the opportunities before us. It doesn't matter where you come from or who you are; just do your best, play your cards right, stay consistent, and with a little bit of luck, success will follow.



# Grade 12 Exam Results

We are incredibly proud of our 2023 Matric learners, who achieved outstanding results against all odds. **Learners from our Hout Bay, Masiphumelele and Maboneng programmes achieved a 100% pass rate, with 81% earning a Bachelor's Pass** – the highest level, granting them university entry. This is nearly double the national Bachelor's pass rate of 41%. These results highlight the profound impact the arts can have on academic achievement, as Lalela's programmes foster critical thinking, discipline and creativity, empowering our learners to excel in all areas of their education.



**Deidre Johnson**, a Lalela participant from Grade 1 to 12 and part of our Female Empowerment Programme, graduated top of her Matric class and began her BCom in Business Administration studies at Rosebank College in 2024.



**Brian Rojas**, a committed Lalela learner from Grade 1 to 12, received the Silikamva High Leadership and Life Orientation awards. In 2024, he secured an internship at a law firm and plans to begin his law degree in 2025.



**Lihle Mjubajuba** graduated from Simonstown High with a Bachelor's Pass. Passionate about community service, she left a lasting legacy by starting a food garden at her school.

# Our communities

“ The learners who attend our classes come from various schools in the area. This setup has been crucial in teaching them to accept each other and live and work together despite their differences, whatever they may be. It helps them find solutions to community challenges, among other things. The Lalela methodology directly addresses this fundamental need, if we are to build a strong nation and move forward with the next generation of leaders who champion unity. It is also an essential skill for navigating all aspects of personal and professional life.

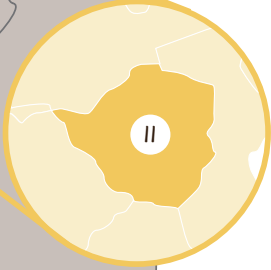
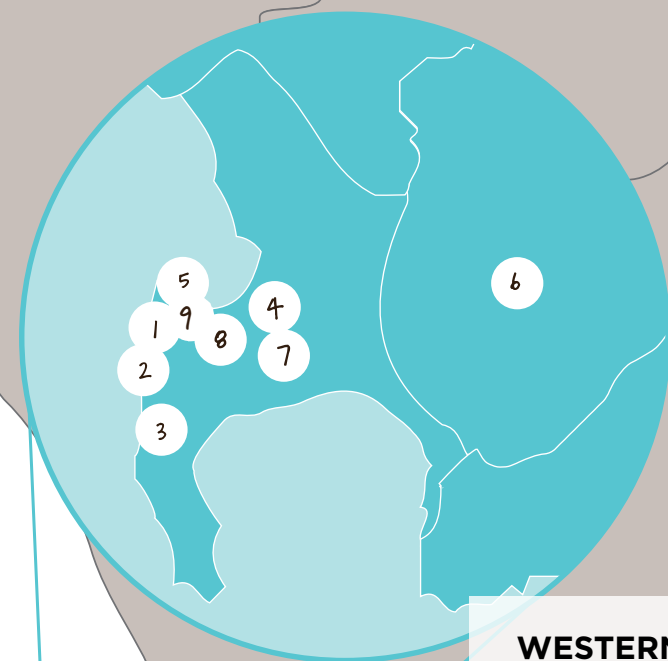
– Chuma Nozewu,  
Lalela Facilitator at Philippi Village,  
Western Cape

Strategic partnerships with low-fee or no-fee schools and other organisations that champion youth development allow us to grow our programme while putting Lalela at the forefront of educational arts in Southern Africa. These partnerships enhance our ability to advocate the critical contribution that the arts make to academic achievement, socio-economic change and innovation.

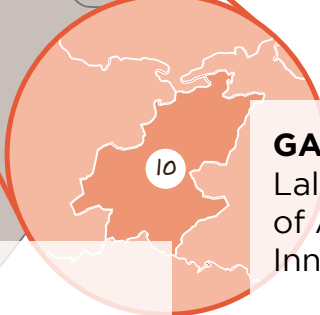




# Our footprint



**ZIMBABWE**  
Zara's Centre



**GAUTENG**  
Lalela Centre  
of Arts and  
Innovation

**WESTERN CAPE**  
Imizamo Yethu, Hangberg,  
Masiphumelele, Bonteheuwel  
Zeitz MOCAA, Bertha Retreat, Philippi Village,  
Bertha House, A4 Art Foundation.

## Western Cape, South Africa

### 1 Imizamo Yethu (IY)

Imizamo Yethu (meaning “our efforts” in isiXhosa) in Hout Bay is where our programme began in 2010, with informal after-school arts education workshops at the Community Centre following the Soccer World Cup. IY, as it’s commonly known, has around 40,000 residents. Despite challenges like overcrowding, unemployment and substance abuse, IY is a vibrant community, home to youth from across the continent. Working here allows us to bridge cultural divides, enabling young people to engage across languages and create a truly inclusive environment.

*School partners: Oranjekloof  
Moravian Primary, Silikamva High*



Attending classes in the largest art museum in Africa is a great benefit for our learners. They have seen and done things they would not have been able to in our school. They get to be in a safe space, where there is access to resources.” – Joe-Mari Theron, teacher at Dryden Street Primary

2

## Hangberg

In 2011, we established the foundation of our arts education programme in partner schools in both Imizamo Yethu (IY) and Hangberg, a community on the steep mountain slope above Hout Bay harbour. Once a thriving fishing village, Hangberg now grapples with economic struggle, gangsterism and domestic violence. Despite these challenges, the community remains vibrant, united in advocating for their rights, with parents deeply invested in their children’s futures. Lalela plays a crucial role in strengthening this community through its youth. The learners’ profound connection to the land and sea inspires their artistic expressions, teaching them to use the arts as a form of advocacy.

**School partners:** Sentinel Primary, Hout Bay High



3

## Masiphumelele

The township of Masiphumelele (which means “let us succeed” in isiXhosa), located between Fish Hoek and Kommetjie on the Cape Peninsula, is another cornerstone of our programme, where we’ve worked to create change since 2011. Despite scarce basic amenities, poverty, gangsterism, crime, and high rates of HIV and tuberculosis, the community remains humble and respectful. The learners are extremely creative, artistic and eager to learn, making the most of their opportunities with impressive ambition. Although Masiphumelele is one of the most under-resourced communities we work in, it has yielded some of our proudest successes due to the learners’ hard work and dedication.

**School partners:** Ukhanyo Primary, Masiphumelele High



4

## Bonteheuwel

In 2018, we launched our programme at Disa Primary in Bonteheuwel, a Cape Flats community facing violence, gangsterism, socioeconomic challenges and inadequate infrastructure. Limited opportunities for youth often lead to drug use and criminal activity. However, Bonteheuwel embodies the spirit of ubuntu – “I am because you are.” Despite the challenges, the community demonstrates deep care and solidarity. Lalela is embraced as a programme by the community, for the community, with parents, shop owners, and school teachers actively volunteering and supporting events. Their commitment and joy in nurturing the development of their youth reflect a community rich in compassion and resilience.

**School partner:** Disa Primary



5

## Zeitz MOCAA

In 2018, we launched our exciting Zeitz MOCAA programme in partnership with this landmark art museum at the V&A Waterfront. Through this partnership, Lalela is able to bring our after-school programme to children from under-resourced, inner-city communities who might otherwise never have had access to the creative arts or esteemed institutions such as the Zeitz Museum of Contemporary African Art.

The learners bring a lively energy to the programme. Their exposure to art at the museum not only enriches their knowledge and experience but also enhances our curriculum, making them more confident, outgoing and positive. They are true go-getters, eager to engage and make the most of every opportunity.

**School partners:** Dryden Street Primary, Ellerton Primary, Prestwich Primary, St Paul’s Primary

## 6 Bertha Retreat, Cape Winelands

In 2019, Lalela partnered with the Bertha Foundation to launch a programme at Bertha Retreat in the Cape Winelands. We provide life-changing arts curricula to children from the communities of Pniel and Langedoc in our dedicated classroom at the Retreat. Despite being adjacent to the affluent tourism-rich Cape Winelands, these communities face significant economic challenges and a notably high school drop-out rate. Despite this, the learners from Pniel and Langedoc are resilient, displaying a strong sense of community and pride in their heritage. Their enthusiasm for the arts and eagerness to learn are inspiring, as they seize every opportunity to improve their futures.

**School partners:** *Nondzame Primary, Pniel Primary*

*"In our community, Lalela has made a significant impact. The kids see Lalela as their safe place where they can come, be children, and feel free at the same time. Many of them have become more confident in themselves and now view things from a different perspective. They understand that they are all unique in different ways – not all of them excel academically, but many are exceptionally talented in the arts. They've developed a deeper understanding of what art is and enjoy it more than ever before."*

*– Yoliswa Bambiso, Lalela Facilitator and community member at Bertha Retreat, Western Cape*

## 7 Philippi Village

In 2020, amidst the pandemic, Lalela introduced its transformative arts curriculum to children from the Siyangena informal settlement at our dedicated classroom in Philippi Village, an integrated Community Development Hub in one of Cape Town's most dangerous and neglected areas. Conveniently located alongside a container walk shopping centre, a business centre, and various social zones, our classroom provides learners with exposure to entrepreneurship and sustainable business solutions. This unique environment inspires them to realise their dreams through creativity and innovation. The Philippi learners, who are bright and confident in expressing their opinions, have honed their skills to articulate ideas and showcase their artistic talents.

**School partners:** *Imbasa Primary School, Intsebenziswano High School, Mzamomhle Primary School, Nelson R Mandela High, Sinethemba High School*



## 8 Bertha House, Mowbray

Our latest project with Bertha Foundation was launched in 2022 at Bertha House in Mowbray. Bertha House provides a resourced space to activists, storytellers, educators, artists and anyone committed to creating more just societies. Bertha House's goals to bring about social and economic justice and human rights for all are perfectly aligned to Lalela's Theory of Change. The space creates the perfect environment to host Lalela workshops for high school learners from the neighbouring school, Thandokhulu High, to spark creative thinking and promote active citizenry through the arts.

**School partners:** *Thandokhulu High School*

## 9 A4 Art Foundation

In 2023, we began a partnership with the A4 Art Foundation, where our high school learners from the CBD attend weekly workshops. This dynamic and experimental space for the arts has introduced them to innovative art-making practices. Being immersed in this environment, alongside artists, curators, and practitioners, is a privilege that broadens our learners' perspectives and opens their minds to new ways of thinking.

**School partners:** *Salt River High, Harold Cressey High, Vista High*



*"The children who attend the Lalela Programme experience a significant boost in confidence. We notice a positive change in their behaviour as soon as they enter this safe space, where they immediately begin to blossom and express themselves freely."*

*- Mr Manyoni, Educator at Phumelela School, Johannesburg*



## Gauteng

### 10 Lalela Centre of Arts and Innovation

Lalela collaborates with several schools in Johannesburg's inner city, providing a safe haven for learners from diverse backgrounds at our centre in the Maboneng district. This area is home to approximately two million multilingual individuals from South Africa and beyond, facing challenges like unemployment, crime, xenophobia and substance abuse. However, inner-city Johannesburg thrives with ideas and opportunities. This vibrant energy is reflected in our learners, who are entrepreneurial from a young age, bold in their aspirations, and confident in achieving their dreams. Our programmes empower them to articulate their thoughts and showcase their talents. Through our partnership with Tomorrow Trust, we extend our art education to learners from Soweto and Diepsloot via Saturday morning workshops.

**School partners:** *Busy Bee Academy, City Rand College, Destiny Girls Colleges, Doornfontein High, Jeppe Girls High, Johannesburg Polytech Institute, JW All Saints College, Mahlasedi, Metropolitan College, Phumelela College, Providence College, Yatal College*

## Zimbabwe

### 11 Zara's Centre, Bulawayo

In 2017 Lalela partnered with Zara's Centre in Bulawayo, Zimbabwe, an after-school safe haven for orphaned and vulnerable children. After seven years of bringing art education to the centre, we have been privileged to witness our learners grow and develop from young primary school children to confident and creative youth in high school.

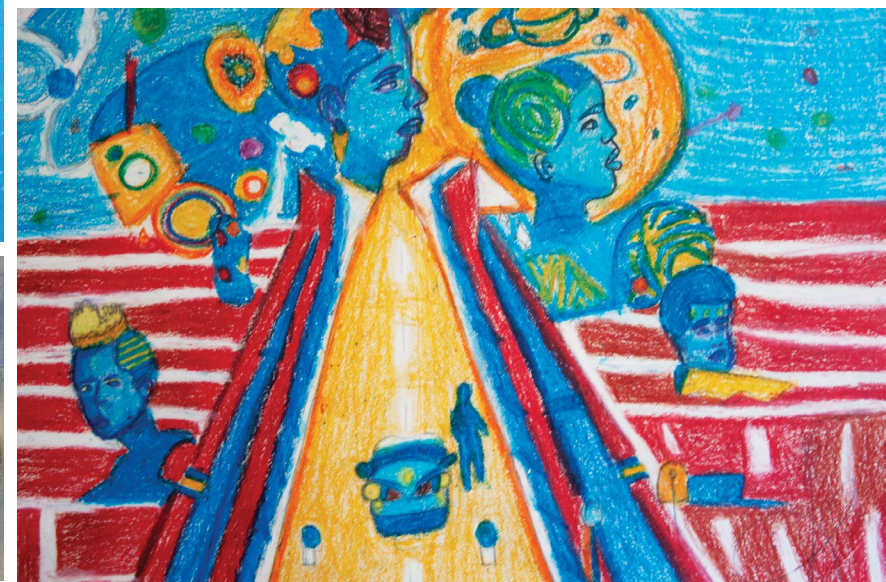
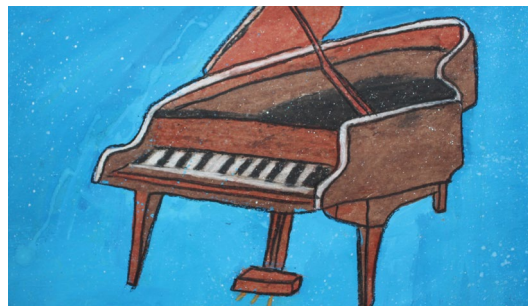
*"Lalela has boosted their self-confidence. They can also express their feelings freely without fear of judgement."*

*- Rebecca Gopito, Lalela Facilitator at Zara Centre, Zimbabwe*





# Curriculum overview



The theme for the 2023 Lalela curriculum was **"Art of Illumination,"** focusing on mastery as an essential skill. To illuminate is to bring light to what may have been hidden, revealing clarity and understanding. Mastery, in this context, is a means of illumination – it involves hard work, perseverance, and consistency, enabling learners to uncover their potential and recognise their achievements. This process builds confidence in their creativity and competence, illuminating their paths towards success. This theme guided the curriculum's development, emphasising creativity, self-awareness and community engagement.

## Highlights:

In **The Rainbow Nation**, learners explored the concept of Ubuntu, promoting collaboration and reinforcing the importance of rules in creating a supportive creative environment.

**Ndilikhaya** ("I am the home") deepened learners' self-awareness as they crafted personal representations of their identities using "house" metaphors.

The **Safer Roads** curriculum guided learners in road and pedestrian safety, encouraging community well-being. By honing creative skills, they developed a sense of agency as active citizens, building empathy and responsibility.

**Heritage Layers**, inspired by Mary Evans' GILT exhibition, involved learners in creating cut-paper silhouettes to explore heritage and cultural backgrounds. This curriculum encouraged reflection on what it means to be young and African in today's society while appreciating South Africa's diverse cultures.

Each curriculum fostered connection, self-expression and cultural awareness, guiding learners on a journey of self-discovery.

“One of the proudest moments was witnessing how the annual theme of illumination enabled learners to discover themselves. By guiding them to become more confident and boosting their self-esteem through the introduced curriculum, we helped learners overcome challenges while fostering their creativity and productivity.”

– Mark Oppelt, Senior Art Facilitator



## Special Programmes

### Shakespeare

We were thrilled to return to the stage with our unique rendition of Romeo and Juliet for the Shakespeare Schools Festival South Africa. While visual arts are central to our programme, Lalela expands learners' horizons through theatre and music. This approach sparks creativity, transforming their perspectives on the world and themselves. Our learners also contributed by painting set elements and props, showcasing the powerful impact of art and creativity.

"I've never done something like this before, but for my first time, it was amazing! The rehearsals we had were super fun and hard at the same time. To stand together as a team and as a family... Being on stage is such an amazing feeling. It wasn't easy, but we definitely had the night of our lives. We were so proud of ourselves; it showed us how hard we'd worked and everything was fantastic."

- Thembeke Singonzo, Lalela Shakespeare Participant, Hout Bay, Western Cape



## Leadership

Each year, Lalela selects learners from Silikamva High School and Hout Bay High School for our Leadership Programme, equipping them with leadership skills and a values-driven mindset through experiential learning and life-skills training.

These students develop into confident achievers and essential role models in communities where such figures are often lacking, inspiring younger learners with their commitment and growth. During Lalela's holiday programmes, they excelled as mentors, leading activities, managing groups, and ensuring safe transport for younger learners.

Their dedication, sacrifice and perseverance left a lasting impression on their peers and the broader community, showing that with determination, they too can become leaders and create positive change.



Being a Lalela leader changed me so much. It has given me knowledge of the world around me but also of myself. It's given me more confidence and I could see the growth over time and I realise that this programme is important for the world we live in, that needs new leaders."

- Alexandra van Nelson, 2023 Lalela Leader

## Female Empowerment



Our commitment to the rights of young women remains at the core of our mission. We strive to elevate them through education and the arts, providing opportunities that allow them to assert their rights and build a brighter future.

Lalela's Female Empowerment Programme is an after-school initiative designed for grade 8 high school girls. It aims to inspire female students to remain in school, build confidence to excel academically, and cultivate the courage to dream beyond societal expectations. The programme also emphasises self-respect, self-esteem, building positive communities of care and understanding of their bodies. Since its launch in 2015, it has been one of Lalela's most successful initiatives, reaching an increasing number of young women in Hout Bay and Masiphumelele.

In 2023, 70 grade 8 girls from Hout Bay High, Silikamva High and Masiphumelele High Schools joined our Female Empowerment Programme.



*"The Female Empowerment Programme made me know myself; it boosted my confidence. It made me realise more about us as girls, and how to treat ourselves and each other. It helped us improve at school with focusing, and it helped me learn how to manage and release my stress when I have issues. It showed a different way of living and what is possible. That's why I think other grade 8 girls coming up should join the programme so that they can learn to value themselves, have confidence in many things, learn to listen, trust themselves, and be fearless."*

*- Yamkela Nthlabeni, Female Empowerment graduate, Masiphumelele, Western Cape*

**Unenceba Nqayiya** (19) from Imizamo Yethu joined Lalela in 2018 and found a creative outlet that made a real difference in her life. Growing up in a community facing challenges like frequent fires, water shortages and crime, Lalela's educational arts programme offered her a space to thrive. Today, Unenceba is a first-year student in Foundation Phase Teaching at Cape Peninsula University of Technology (CPUT).

I grew up in Imizamo Yethu (Hout Bay). While life in IY wasn't always pleasant, I have fond memories of my time there. We faced many challenges, including frequent fires (I was a victim of the 2017 fire that claimed lives), water shortages, limited toilets, cramped housing and a rising crime rate. Fortunately, my school was close to home, which made my upbringing a bit easier.

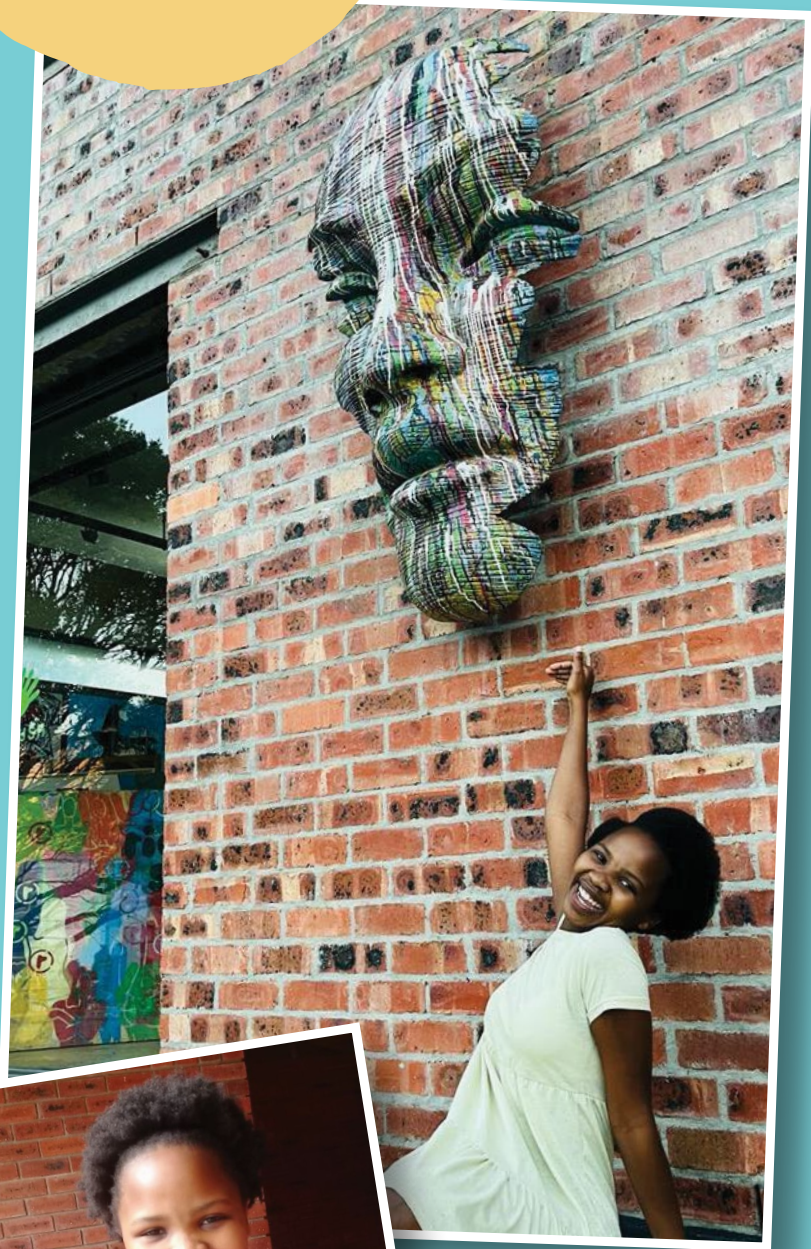
Being part of Lalela helped me in many ways. I fell in love with art and made lifelong friends, most of whom I still have in my life today.

Knowing I had something meaningful to do after school, surrounded by people I love, was incredibly fulfilling.

To me, Lalela means love. Our facilitators were passionate about art, and their enthusiasm created a comfortable and supportive environment in our classes. This love extended to us as students, allowing us to love and respect one another. In the future, I aspire to become an educator. I want to give back to my community by positively shaping young minds.



You are the one who decides which life you want to live. Your choices today determine your tomorrow."



# Civic Engagement

## Human Rights Day

### Johannesburg:

Lalela students from our Maboneng programme took part in the Human Rights Festival at Constitution Hill, marking the close of Human Rights Month in South Africa. They engaged in dialogues, debates and social justice activities, with sessions on topics such as digital safety and sanitary health. Alumni, like Wandi Ndlovu, showcased their work, including his washable sanitary pads project. The festival also opened doors for some learners to participate in professional acting and dance lessons.

### Cape Town:

Lalela hosted a Human Rights Day event at Bertha Retreat, where our Lalela leaders conducted arts-based workshops focused on spatial justice. Children from the surrounding communities participated, exploring concepts of justice and equality through creative activities.





## Youth Day

On 16 June, Lalela hosted a **Youth Day programme** in Bonteheuwel, honouring apartheid activist Anton Fransch, who attended the same school as Lalela learners. Led by facilitator Marylin November, who shared memories of Bonteheuwel during the 1976 protests, the event was impactful. Learners created candles to continue the local tradition of lighting them as symbols of resistance, and they collaborated on posters highlighting youth responsibility and protection.

For the **Bertha Spaces Festival**, Lalela ran programmes at three venues. At Bertha House, Lalela Leaders and Bertha learners crafted an interactive artwork on radical hospitality. In Philippi Village, Lalela learners invited the public to join in a collaborative artwork on food sustainability, while Bertha Retreat displayed an exhibition of learners' artwork. Lalela staff and leaders also held Youth Day workshops for grades 1-12, fostering engagement and creativity among young participants.



## Mandela Day

During the June holiday period, our two Stanford University interns, Alicia Service and Aditya Udaygiri, brought fresh, creative energy to our programmes. For Mandela Day, they planned and facilitated a storytelling and mural project with Lalela Leaders at Sentinel Primary. The project focused on Nelson Mandela's life, encouraging learners to reflect on his impact and how they, too, are capable of creating positive change in their communities.





“Parents with children in our Lalela programme don’t have to worry about their kids getting into trouble during school holidays because Lalela keeps them occupied and engaged in a positive way.”

– Yoliswa Bambiso, Lalela Facilitator and community member, Bertha Retreat, Western Cape

# Holiday Programmes

Lalela’s holiday programmes are vital to our mission, offering a safe space for learners to thrive during long school breaks. These programmes nurture creativity, learning and play, keeping learners positively engaged. In 2023, our holiday programmes laid the foundation for standout projects and significant opportunities, expanding our learners’ horizons and showing them what is possible.

“One of the long-term outcomes of our programme is to inspire active citizenry in the hearts and minds of the young people we work with. Through art they are able to recognise that no matter who you are or where you are from, your voice matters and can make a difference in the world. This project helped our learners to develop empathy for vulnerable wildlife and to understand that as humans we are responsible for taking care of ourselves, our community and the earth we inhabit.”

– Firdous Hendricks, Lalela Executive Director



## March Holiday Programme

During the March Holiday Programme, all our learners across various programmes collaborated to create the props and backdrops for our annual Shakespeare production, this year featuring Romeo and Juliet. This process provided invaluable lessons in set design and costume creation, exposing them to the vastness of the art and design industry. The spectacular results ensured that every learner at Lalela played a meaningful role in the production.

## July Holiday Programme

### Art for the Rhinos!

The first week of our July Holiday Programme focused on wildlife conservation, with a special emphasis on the plight of endangered rhinos. This theme not only raised awareness among Lalela learners but also inspired the creation of some incredible artworks.

We partnered with Rhino Disharmony, a global platform committed to highlighting the rhino-poaching crisis in South Africa and educating local communities. During the programme, Lalela learners of all ages worked on various art projects, ranging from collaborative anti-poaching posters to individual paintings of rhinos roaming freely in the wild.

Some of these artworks were transformed into beautiful Lalela Scarves. In a powerful collaboration between art and conservation, Lalela and Rhino Disharmony hosted a fashion show at the Winchester Hotel in Cape Town, showcasing the scarves and raising awareness about rhino poaching. 100% of the profits from the scarf sales went directly to supporting Lalela.

“It was a proud moment to see work made by Lalela learners exhibited in the museum space at such an auspicious occasion. Their paintings expressed and interpreted the themes of the exhibition with honesty and joy, showcasing the introspection and maturity of Lalela learners.”

- Amy Cornfield, Education Specialist, Zeitz MOCAA



## A gaze from within

Lalela learners created artwork inspired by the exhibition *When We See Us: A Century of Black Figuration in Painting* at Zeitz MOCAA. The result was a stunning collection of paintings and photomontages reflecting the six exhibition themes: Everyday life, Joy, Repose, Sensuality, Spirituality, and Triumph. Through their interpretations, the young artists expressed a range of emotions – honesty, joy and introspection.

Impressed by the work, Zeitz MOCAA selected the learners' art for exhibition. Seeing their creations displayed at the museum was a powerful, almost surreal experience for many. At the exhibition's unveiling, Firdous Hendricks, Lalela's Executive Director, spoke about the importance of engaging young people in the arts.

## December Holiday Programme

In the spirit of giving back, our December Holiday Programme centred on school beautification projects, transforming classrooms and creative spaces with educational games and murals. Our young artists also crafted heartfelt gifts of appreciation for their loved ones.



**Luyolo Gayeka** (21) is a Lalela alumnus studying for a degree in Fine Art at the prestigious Rhodes University. His journey has come full circle, from joining Lalela as a participant in the after-school programme to working at Lalela as an intern before pursuing his tertiary studies.

I first heard about Lalela in 2010, but I officially joined in 2014 when I was 10 years old and in grade 4 at Ukhanyo Primary School in Masiphumelele. What initially drew me to Lalela was the promise of a meal, as there was often no food at home. Lalela became my comfort zone, a place where I knew I would get a slice of bread after each session to satisfy my hunger. But what truly kept me coming back was my love for art, especially painting. Art brought me happiness and peace, and Lalela nurtured that passion.

As I moved on to high school, I continued with Lalela because I wanted to refine my skills as an artist. The Lalela classroom was a safe space where I could be myself, connect with peers, and engage

with new people who joined the programme. It was an environment where ideas flowed freely, allowing me to grow both personally and artistically.

I feel incredibly blessed to be studying at Rhodes University, especially as the first person in my family to attend university. My goals are to learn, develop my skills and gain the independence that comes with university life. My family is overjoyed and proud of my achievement.

The Lalela team taught me many valuable skills, including public speaking, teamwork, and how to brainstorm ideas and develop a vision with clear objectives. These are life skills that I will carry with me forever.



Never compromise on your future. Always have someone who believes in you, because that one person can be the key to changing your life for the better. For me, that person was Lalela's Nwabisa Ndongeni, and I am forever grateful.



# 2023 Highlights

## Gallery visits

Lalela aims to ignite creativity and entrepreneurship, opening doors to new possibilities for learners through strategic partnerships. At the **A4 Art Foundation**, high school learners participated in a digital art workshop with Mitchell Gilbert Messina, where they crafted shadow puppets. At the **Goodman Gallery**, they explored Leonardo Drew's solo show in Johannesburg and Hank Willis Thomas and Faith Ringgold's exhibition in Cape Town, followed by engaging art workshops inspired by the artists. Learners from our Bonteheuwel programme visited Igshaan Adams' residency at **Zeitz MOCAA**, where they participated in a hands-on weaving workshop. Igshaan Adams, a world-renowned artist from Bonteheuwel, is the recipient of the prestigious Standard Bank Prize and has exhibited his work at the Chicago Museum. His incredible success serves as an inspiration for the learners, showing them what is possible for their own futures. Our high school learners also attended Mary Evans' solo exhibition, GILT.

These excursions are not just cultural outings; they serve as windows into a world of possibilities, inspiring learners to dream big and recognise the transformative power of their own creativity and innovation.

## Cape Town's first Lalela fundraiser: a milestone

In February 2023, Lalela hosted its inaugural South African fundraising event in Cape Town at The Yard, marking a significant moment for the organisation. The event brought together 140 influential guests and raised funds through auctions and pledges, which was reinvested into Lalela's programmes across the country. This first-of-its-kind fundraiser highlighted the growing support for Lalela's mission and has become a standout occasion during the Investec Cape Town Art Fair.



## Community Exhibition

Lalela's annual Community Exhibition celebrates the artistic achievements of our learners, showcasing their imagination and hard work at the end of the school year. This event allows parents to connect with Lalela's programmes and witness their children's growth, often revealing hidden talents. By attending, parents become integral to their children's creative journeys, boosting their confidence and encouraging further artistic exploration. The exhibition highlights the profound impact of art and community support in nurturing young minds.

## Cape Town's new iconic sign

This year, Lalela partnered with the V&A Waterfront on an exciting project featuring human-sized letters spelling CAPE TOWN, now a major tourist attraction. Each letter represents the spirit of Western Cape mountain ranges, with 14 Lalela learners' artworks showcased on the Lion's Head and Paarl Mountain designs, giving them a platform at a global landmark.

## Investec Cape Town Art Fair

Lalela made a significant impact at the 2023 Investec Cape Town Art Fair by showcasing the artistic talent of its young learners and highlighting the vital connection between art and education. A standout moment was when Lalela alumni led the Kids-4-Kids art tours for school groups, while attendees had the chance to purchase our incredible scarves.

## Johnathan Butler

Grammy-nominated musician and proud Lalela board member, Jonathan Butler, recently made his annual trip back to Cape Town, his hometown, to celebrate his birthday in a special way. Johnathan has long been an advocate for Lalela's after-school educational arts programmes. During his visit to Sentinel Primary in Hout Bay, he and his guests actively participated in the play and art-making activities that are at the heart of the Lalela approach.

## Women's Day

Lalela's Women's Day event celebrated creativity, mentorship and connection. Female learners paired with mentors to create heart maps - artworks exploring identity, fears and dreams. The event featured reflective conversations, art-making and performances, showcasing the power of art and mentorship to inspire and build confidence in young women.



100%

of the profits from each sale are reinvested into Lalela, supporting our mission to amplify the voices of our learners and showcase their creativity to a global audience through the transformative power of arts education.

2022 -2023  
Total sales value  
increased by  
**17% in the USA &  
33.8% in SA.**

# Lalela Scarf

Lalela Scarf remains a cornerstone of our organisation's sustainability efforts. Our product range includes everything from **luxurious scarves to the cosiest pyjamas**, all featuring original patterns created by students in our programmes. These products are sold directly to the public and high-end retail outlets, both locally and internationally, and are available online at **[www.lalelascarf.org](http://www.lalelascarf.org) and [www.lalelascarf.co.za](http://www.lalelascarf.co.za).**

# Our Financials

Financial Summary for the year ended 28 February 2023.

## Statement of Financial Position

Figures in Rand	2023	2022
<b>Assets</b>		
Non-Current Assets		
Equipment	123,759	32,275
Current Assets		
Trade and other receivables	28,060	65,232
Cash and cash equivalents	15,411,470	11,547,588
	<b>15,439,530</b>	<b>11,612,820</b>
<b>Total Assets</b>	<b>15,563,289</b>	<b>11,645,095</b>
<b>Equity and Liabilities</b>		
<b>Equity</b>		
Trust capital	100	100
Accumulated surplus	14,635,839	10,744,116
	<b>14,635,939</b>	<b>10,744,216</b>
<b>Current Liabilities</b>		
Trade and other payables	927,350	900,879
<b>Total Equity and Liabilities</b>	<b>15,563,289</b>	<b>11,645,095</b>

## Statement of Comprehensive Income

Figures in Rand	2023	2022
Donations received	13,670,199	12,271,160
Sundry income	(381)	46,090
Operating expenses	(10,515,495)	(10,156,903)
<b>Operating surplus</b>	<b>3,154,323</b>	<b>2,160,347</b>
Investment revenue	737,400	420,692
<b>Surplus before taxation</b>	<b>3,891,723</b>	<b>2,581,039</b>
Taxation	-	-
<b>Surplus for the year</b>	<b>3,891,723</b>	<b>2,581,039</b>

MAZARS  
REGISTERED AUDITOR

PARTNER: NICOLA THELANDER  
REGISTERED AUDITOR  
CAPE TOWN



# Our Sustainable Future

Lalela's future impact relies on sustainable funding and strategic partnerships. We aim to increase South African investment by focusing on education and transformation.

Our sustainability is further solidified by our longstanding relationships within the communities we serve, including principals, teaching staff, after-school stakeholders and community leaders. These relationships are reinforced through active community engagement, organising and participating in events such as murals, educational programmes and student support initiatives.

We ensure programme quality through rigorous monitoring and evaluation of our curriculum and programmes through tracking attendance, and assessing impact via focus groups and teacher feedback.

We also prioritise capacity building, continuously training staff to stay updated on best practices. This holistic approach ensures we meet our goals while developing both learners and staff.

Our sustainability strategy includes corporate sponsorships, private donor platforms and digital campaigns to fund classrooms. Each classroom, led by trained facilitators, fosters experiential learning that extends into the community.

With core funding, we can sustain and expand our programmes effectively.

**Visit our website, [www.lalela.org](http://www.lalela.org)**

# Strategic Partners



GOODMAN GALLERY



One&Only  
Cape Town



SARISPAE  
Schools Festival



ZEITZ MOCAA  
Zeitz Museum of Contemporary Art Africa  
Zeitz Museum van Kontemporêre Kunste Afrika  
iZeitZ - Umzi wogcina buqisa baseAfrika





# Our 2023 Boards & Teams

## Our Team, New York

**Chief Executive  
Officer & Co-founder:**  
Andrea Kerzner

**Chief Creative Officer  
and Co-founder:**  
Sandy Tabatznik

**Programme &  
Communications  
Administrator:**  
Melissa Jester

## US Board

**Chairperson:**  
Andrea Kerzner

**Secretary:**  
Terry Torok

**Treasurer:**  
Norman Cohen

Busie Matsiko  
Colin Cowie  
Colin Finkelstein  
Jesse Robert Lovejoy  
Jonathan Butler  
Kweku Mandela  
Lisa Kaye  
Michael Beneville  
Michele Wiltshire  
Sandy Tabatznik  
Shaun Osher  
Wendy Fisher

## Advisory Board

Carmen Zita  
David Friedman  
Edward Nahem  
Emily Beare  
Greg Calejo  
Lara Stein  
Mark Landis  
Mark Rutstein  
Nina Runsdorf

## SA Board

**Chairperson:**  
Andrea Kerzner

**Secretary:**  
Caro Macdonald

**Treasurer:**  
Suzanne Annenberg

Abigail Bisogno  
Elana Brundyn  
Lungi Morrison  
Marco Van Embden  
Oliver Nurock  
Sandy Tabatznik

## Trustees

Andrea Kerzner  
Abigail Bisogno  
Marco Van Embden



### Staff working at Lalela in 2023

#### Cape Town Head Office:

**Executive Director:** Firdous Hendricks

**Senior Programmes Manager:**

Nwabisa Ndongeni

**Partner Programmes & M&E Manager:**

Sean MacGinty

**Programmes Development Manager:**

Rowan Roman

**Events and Content Manager:** Linda Daniels

**Office Administrator:** Maxine Christians

**Interns:** Arnique Van Schalkwyk, Luyolo Gayeka, Shanell Du Plessis

### Cape Town Art Facilitators:

**Bertha Retreat Facilitators:** Siyolisi Bani

**Bertha Retreat Co-facilitator:** Yoliswa Bambiso

**Bonteheuwel Facilitator:** Marilyn November

**Bonteheuwel Co-facilitator:** Cheldon Booysen

**Hout Bay Programme Coordinator & Senior**

**Foundation Phase Facilitator:** Tandile Makhabeni

**Hout Bay Senior Facilitator:** Mark Oppelt

**Hout Bay & Female Empowerment Facilitator:**

Carol Dube

**Hout Bay Facilitator:** Thandi Gaji

**Hout Bay Facilitator:** Ryan Lott

**Masiphumelele Facilitator:** Nosiphiwo Nojavu

**Masiphumelele Female Empowerment Facilitator:**

Livhuwani Mukhondo

**Philippi Village Coordinator & Senior Facilitator:**

Chuma Nozewu

**Philippi Village and Tomorrow Trust Facilitator:**

Siphosetu Gagela

**Zeitz MOCAA Facilitator:** Simamkele Sitwebile

### Maboneng Precinct Lalela Centre for the Arts and Innovation:

**Programme Manager:** Vika Mjoka

**Facilitator:** Thandiwe Sibanyoni

**Facilitator:** Portia Qhemekoane

**Intern:** Botsang Raymond Monoana

### Zara's Centre (Zimbabwe)

**Facilitator:** Rebecca Gopito



**Lalela Office, South Africa**

+27 21 790 1108

firdous@lalela.org

36 Albert Road, Hout Bay, Cape Town 7806

**PBO:** 93 0036496

**NPO:** 090608

**Lalela Office, New York**

+1 (215) 359-5214

melissa@lalela.org

PO Box 20395, New York, NY 10023